

6V | 12V | 24V

GENIUSPRO25



A MULTI-VOLTAGE PROFESSIONAL BATTERY CHARGER.™

MULTI-VOLTAGE

6V, 12V, & 24V.
6-volt (50-amps), 12-volt (50-amps), and 24-volt (25-amps) - for lead-acid automotive, marine, and deep-cycle batteries, including flooded, gel, AGM, and maintenance-free, plus lithium-ion.

0.0V

FORCE MODE.
For extremely dead batteries lower than 1-volt, manually turn on force mode to detect and charge batteries all the way down to zero volts.

24/7

ZERO OVERCHARGE.
Safely charge any battery year-round. Charge continuously without user intervention and with zero risk of overcharging your battery.

-40°C

ULTRA-FLEXIBLE CABLING.
Featuring ultra-flexible silicone cabling - down to -40°C - with protective nylon braided shielding for maximum protection against abrasion.



NOCO

30339 Diamond Parkway, #102
Glenwillow, OH 44139 | USA
1.800.456.6626

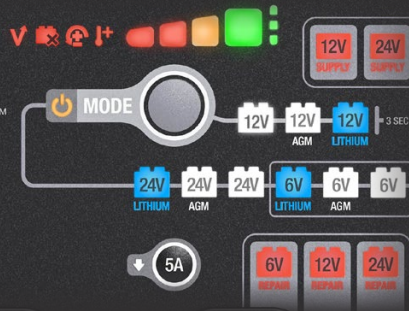
no.co

LEAD ACID

WET GEL MF EFB AGM LI-ION

AUTO | MARINE | RV | POWERSPORT | LAWN & GARDEN

NOCO genius PRO 25™



CHARGING MODES

LEAD-ACID

Used for 6V, 12V, & 24V wet cell, gel, enhanced flooded, maintenance-free, & calcium batteries.



AGM

Used for 6V, 12V, & 24V AGM or maintenance-free batteries.



LITHIUM

Used for 6V, 12V, 24V lithium-ion batteries (including lithium iron phosphate). Only for batteries with Battery Management Systems (BMS).



REPAIR

Used to repair old, idle, damaged, stratified, or sulfated batteries.



SUPPLY

Converts to a DC power supply for 12V or 24V DC devices, or as a memory retainer when replacing a battery.



FORCE

Used to charge batteries below 1V. All charge mode LED's will flash and the selected mode will illuminate.

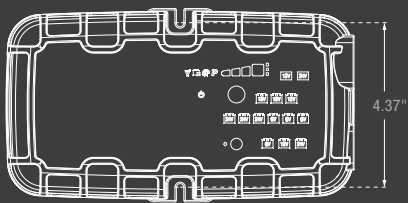


5A MODE

Allows the unit to operate at a lower charge current for smaller batteries or maintenance.



WHAT'S IN THE BOX

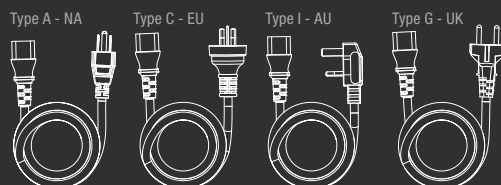
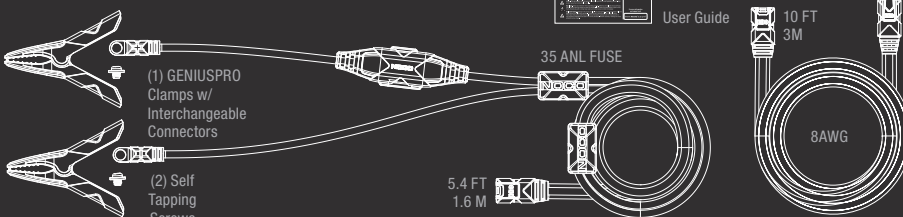


9.3" x 5.1" x 3.0" (23.6 x 13 x 7.6 cm)

*Accessories not to scale with GENIUSPRO25



EVA CASE



NOCO

30339 Diamond Parkway, #102
Glenwillow, OH 44139 | USA
1.800.456.6626

no.co



THERMAL COMPENSATION.

The new integrated thermal sensor automatically monitors and adjusts the charging cycle based on fluctuations of ambient temperature. Avoids under-charging in cold weather down to -4°F and avoids over-charging in hot weather up to 122°F.

Battery Size CHARGING TIMES (based on 6V/12V modes)

25Ah	0.75hr	*Approximate charging times at 50% depth of discharge.
50Ah	1.5hr	
100Ah	3hr	
200Ah	6hr	
500Ah	15hr	

TECHNICAL SPECIFICATIONS

CHARGING CURRENT:	25A (6V, 12V), 12.5A (24V) DC	
TYPES OF BATTERIES:	6V, 12V, 24V	
OUTPUT POWER:	375W	
CHARGING VOLTAGE:	Various	
WEIGHT:	2.7 lbs (1.22kg)	
INPUT/ WORKING VOLTAGE AC:	100-240 VAC, 50-60Hz	
LOW-VOLTAGE DETECTION:	1V (6V, 12V, 24V)	
BACK CURRENT DRAIN:	<0.5mA	
AMBIENT TEMPERATURE:	-4°F to +122°F (-20°C to +50°C)	
HOUSING PROTECTION:	IP20	
COOLING:	Forced Air	
VOLUMETRICS:	Retail Packaging: Dimensions: 15.75" x 10.03" x 8.74" Weight: 11.06lbs UPC: 0-46221-19051-9	Master Carton: Dimensions: 20.94" x 16.61" x 9.61" Weight: 25.88lbs Quantity: 2 UCC: 10046221190516
	Inner Carton: Dimensions: 14.65" x 8.74" x 6.85" Weight: 7.98lbs	Units Per Pallet: 48 Units

